

by the writer in the 'Geol. Mag.' dec. iii. vol. vi. p. 353. This bone accords so closely with the proximal extremity of the tibia of *Iguanodon*, that there is no doubt but that it is the corresponding bone; and were it not apparently solid throughout it might be referred to the same family.

Presented by Professor T. H. Huxley, 1888.

- R. 1626 a. The middle portion of a right femur agreeing in relative size with the preceding; from the same locality. Noticed by Huxley, *op. cit.* p. 1, as a left femur of *Euscelesaurus*. It is possible that this bone may belong to the present form.

Presented by Professor T. H. Huxley, 1888.

Family SCOLIDOSAURIDÆ (*suprà*, i. p. 180).

Genus SYNGONOSAURUS, Seeley¹.

Imperfectly known, and provisionally referred to this family. Dorsal vertebræ with compressed centra, to which the arches are firmly united, tall neural canal, and no rib-facets on the arches. Terminal faces of anterior dorsals triangular, and a sharp hæmal ridge to centrum, which disappears later in the series.

Syngonosaurus macrocerus, Seeley².

The type and only described species. The following specimens agree with the type dorsals, but it is not easy to see how they differ from those described in the memoir cited (p. 613) as *Eucercosaurus*.

Hab. Europe (England).

- R. 460. An imperfect dorsal vertebra; from the Cambridge Greensand. (Fig.) Described and figured by the writer in the 'Quart. Journ. Geol. Soc.' vol. xlv. p. 43, fig. 1, and provisionally referred to this species. The figure is reproduced in wood-cut fig. 60. The tall and narrow neural canal is a feature in addition to those mentioned in the description, in which this vertebra agrees with the *Scolidosauridæ*.

Presented by Sir R. Owen, K.C.B., 1884.

- R. 460 a. A more imperfect dorsal vertebra, which has been transversely fractured and the broken surfaces polished; from

¹ Quart. Journ. Geol. Soc. vol. xxxv. p. 621 (1879).

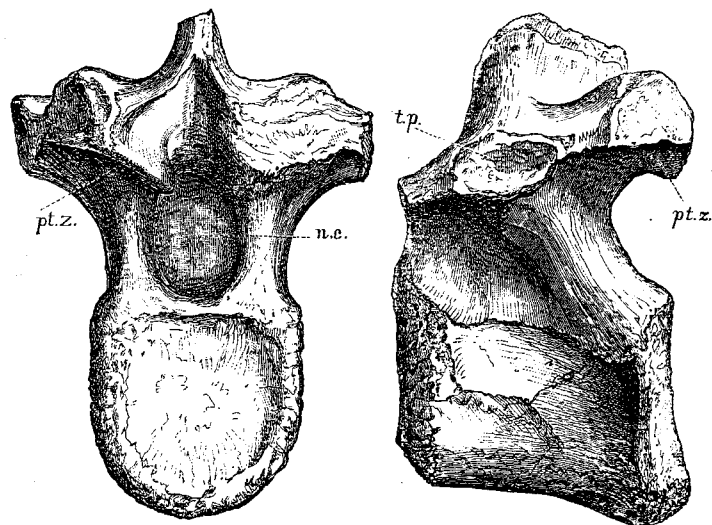
² *Loc. cit.*

the Cambridge Greensand. Probably associated with the preceding; noticed by the writer, *l. c.* p. 42.

Presented by Sir R. Owen, K.C.B., 1884.

- R. 460 b. The centrum and base of the arch of a nearly similar dorsal vertebra, which has been longitudinally bisected in

Fig. 60.



? *Syngonosaurus macrocerus*.—Posterior and left lateral aspect of an imperfect dorsal vertebra; from the Cambridge Greensand. †. *tp.*, transverse process; *pt.z.*, postzygapophysis; *n.c.*, neural canal. (From the 'Quart. Journ. Geol. Soc.')

a vertical plane; from the Cambridge Greensand. Probably associated with the preceding; noticed by the writer, *l. c.*

Presented by Sir R. Owen, K.C.B., 1884.

- R. 460 c. An imperfect dorsal vertebra probably belonging to the same individual as the preceding; from the Cambridge Greensand.

Presented by Sir R. Owen, K.C.B., 1884.

46376. The centrum of a sacral vertebra which belongs to the present or an allied form; from the Cambridge Greensand.

Cunnington Collection. Purchased, 1875.

GENUS *non det.*

The following specimen probably indicates a Dinosaur allied to

the American Cretaceous forms described as *Ceratops*, and the European Neocomian *Struthiosaurus* (*Crataomus*).

R. 1656. An imperfect bone which is provisionally regarded as one of the horn-cores of the skull; from the Wealden of Brook, Isle of Wight. This specimen, which is described and figured by the writer in the 'Quart. Journ. Geol. Soc.' vol. xlv. pt. 2, is extensively hollowed at the base, and presents a striking resemblance to the horn-cores figured by Marsh in the 'Amer. Journ.' ser. 3, vol. xxxvi. pl. xi., as the types of *Ceratops*, and in a less marked degree to the larger bone figured by Seeley in the 'Quart. Journ. Geol. Soc.' vol. xxxvii. pl. xxvii. fig. 4, as *Crataomus*, and which is stated by Marsh, in the 'Geol. Mag.' dec. iii. vol. vi. p. 207, to belong to the skull.

Presented by the Dorsetshire Museum, 1889.

Family IGUANODONTIDÆ (*supra*, i. p. 191).

Genus **CRYPTODRACO**, Lydekker¹.

Syn. *Cryptosaurus*, Seeley².

Typically known by the femur, which is characterized by its straight and stout shaft, on which the inner trochanter forms a ridge, and the absence of an intercondylar groove on the anterior aspect. On the proximal aspect of this bone the head is larger than the great trochanter.

Cryptodraco eumerus (Seeley³).

Syn. *Cryptosaurus eumerus*, Seeley⁴.

The type species. Of comparatively small size, the length of the femur being 0,312 (12·25 inches).

Hab. Europe (England).

R. 1609. Cast of the right femur. The original, which is preserved in the Woodwardian Museum, Cambridge, and is the type, was obtained from the Oxford Clay, locality unknown. It is figured by Seeley in the 'Quart. Journ. Geol. Soc.' vol. xxxi. pl. vi., and is noticed by the writer on p. 45 of

¹ Quart. Journ. Geol. Soc. vol. xlv. p. 46 (1889).

² *Ibid.* vol. xxxi. p. 149 (1875).—Preoccupied by Geoffroy (1831).

³ *Loc. cit.*—*Cryptosaurus*.

⁴ *Loc. cit.*

vol. xlv. of the same serial. The inner trochanter and the outer condyle are broken away.

Made in the Museum, 1888.

R. 1617. An imperfect dorsal vertebra which would agree in relative size with the type, and may be referable to the present form; from the Oxford Clay of Weymouth. This specimen, which has been bisected in a vertical longitudinal plane, shows the centrum and the base of the neural canal. The length of the former is 0,061 (2·4 inches), and its transverse diameter 0,051 (2 inches). It has somewhat the same degree of lateral compression as in the dorsals of *Iguanodon dawsoni*, and the neural canal is of the low type characteristic of the *Iguanodontidæ* as distinguished from the *Scelidosauridæ*.

Presented by R. Lydekker, Esq., 1889.

Genus **CAMPTOSAURUS**, Marsh¹.

Syn. *Camptonotus*, Marsh².

Including *Cummoia*, Seeley (*suprà*, i. p. 195).

Teeth simpler than in the typical group of *Iguanodon*. Cervical vertebrae opisthocelous; sacra flattened inferiorly and not ankylosed. Manus with five normal digits. Ilium (*suprà*, i. p. 192, fig. 35) typically deep, with short and pointed pre- and postacetabular processes, the latter having a distinct ventral plate; pubis relatively stout, and as long as ischium. Femur slightly longer than tibia, with curved shaft and pendent inner trochanter; typically four functional digits in pes.

The following forms are provisionally referred to this genus, their small size distinguishing them from all known members of the Proguanodont group of *Iguanodon*.

Camptosaurus valdensis, Lydekker³.

Of the approximate size of *C. leedsi*, but doubtless, on account of its higher geological horizon, specifically distinct.

Hab. Europe (England).

Type, the femur No. R. 167, *suprà*, i. p. 195.

The mandibular ramus, No. 180, *suprà*, i. p. 227, is provisionally referred to this species.

¹ Amer. Journ. ser. 3, vol. xxix. p. 169 (1885).

² *Ibid.* vol. xviii. p. 501 (1879).—Preoccupied by Uhl for a genus of Orthopterous Insects in 1864.

³ Quart. Journ. Geol. Soc. vol. xlv. p. 48 (1889).